

## CERPASS HTB®

**CERPASS HTB®**, based on the original CERPASS XTL® seeded gel product, offers the latest in ceramic grain technology. Building on the unique nano-structure of the grains, which are composed of extremely uniform, sub-micron crystals, HTB modifies the chemical composition to minimize grain growth at high temperatures. This subtle change in chemistry stabilizes the nano-structure and allows for vitrified bond systems of up to 1250°C. A second benefit is the grains' low force grinding capability. CERPASS HTB® is the most versatile, longest lasting ceramic grain on the market today.

### Physical Properties: (Typical)

<b>Compound</b>	Alpha Aluminum Oxide	<b>Hardness (GPa)<sup>A</sup></b>	< 20
<b>Color</b>	White Translucent to Off-White/Opaque	<b>Density (g/cm<sup>3</sup>)<sup>B</sup></b>	> 3.9
<b>Shape</b>	Weak and Splintery	<b>Crystal Size (µm)<sup>C</sup></b>	0.2

A: by Vickers Diamond Indent Method B: by Helium Pycnometry  
C: by Uncorrected Intercept Method of SEM Photographs

### Chemical Properties: (Typical)

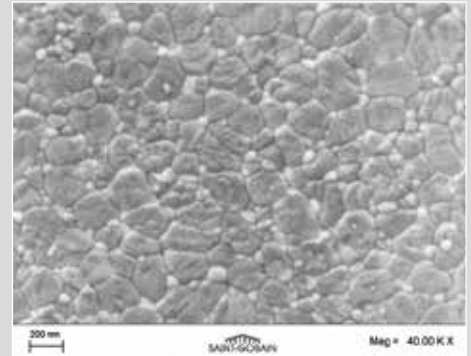
<b>Predominant Chemical Composition</b>		Al <sub>2</sub> O <sub>3</sub> ≥ 95 %	
<b>Trace Chemical Composition</b>			
<b>Constituent</b>	<b>Typical</b>	<b>Constituent</b>	<b>Typical</b>
ZrO <sub>2</sub>	2-3%	Fe <sub>2</sub> O <sub>3</sub>	< 200 PPM
MgO	~ 1%	Na <sub>2</sub> O	< 100 PPM
SiO <sub>2</sub>	< 700 PPM	CaO	< 100 PPM

### Product Availability: Macro-Sized Grains – Treated and Untreated

CERPASS® Code	Description	Bond Type	Sizing	Grit Sizes
HTB-0535	Weak, Untreated	Vitrified	ANSI or FEPA-F	20-150
HTB-0537	Weak, Silane treated	Resin/Organic	ANSI or FEPA-F	20-150



Macrostructure of 36-grit CERPASS HTB® grains.



An actual scanning electron microscope (SEM) photograph, at 50,000 magnification, shows the unique sub-micron crystal structure of CERPASS HTB® grains

**Sizing Convention and Specifications:**

**Sizing Fractions – Distribution Control**

CERPASS HTB® is processed to American National Standards Institute (ANSI), Table 2, ANSI B74.12-2001 and Fédération Européenne des Fabricants de Produits Abrasifs (FEPA -F), FEPA -standard 42-GB-1984 R 1993.

	Control Screen Coarse Grain	Oversize	First Nominal	Second Nominal	Control Screen Fines Grain		Control Screen Coarse Grain	Oversize	First Nominal	Second Nominal	Control Screen Fine Grain
Grit Size	Test Sieve 1	Test Sieve 2	Test Sieve 3	Test Sieve 3 & 4	Through Test Sieves 5	Grit Size	Test Sieve 1	Test Sieve 2	Test Sieve 3	Test Sieve 3 & 4	Through Test Sieves 5
20	+12/0	+16/(0-20)	+18/45+	(+18+20)/70+	-25/(0-3)	60	+40/0	+50/(0-30)	+60/40+	(+60+70)/65+	-80/(0-3)
22	+14/0	+18/(0-20)	+20/45+	+25/70+	-30/(0-3)	70	+45/0	+60/(0-25)	+70/40+	(+70+80)/65+	-100/(0-3)
24	+16/0	+20/(0-25)	+25/45+	(+25+30)/65+	-35/(0-3)	80	+50/0	+70/(0-25)	+80/40+	(+80+100)/65+	-120/(0-3)
30	+18/0	+25/(0-25)	+30/45+	(+30+35)/65+	-40/(0-3)	90	+60/0	+80/(0-20)	+100/40+	(+100+120)/65+	-140/(0-3)
36	+20/0	+30/(0-25)	+35/45+	(+35+40)/65+	-45/(0-3)	100	+70/0	+100/(0-20)	+120/40+	(+120+140)/65+	-200/(0-3)
46	+30/0	+40/(0-30)	+45/40+	(+45+50)/65+	-60/(0-3)	120	+80/0	+120/(0-20)	+140/40+	(+140+170)/65+	-230/(0-3)
54	+35/0	+45/(0-30)	+50/40+	(+50+60)/65+	-70/(0-3)	150	+100/0	+140/(0-15)	+200/40+	(+200+230)/65+	-325/(0-3)

**Loose Pack Density (LPD) Limits: (Macro Sizes)**

LPD: HTB – Weak Shape

Grit Size	Lower Limit (g/cm³)	Upper Limit (g/cm³)	Grit Size	Lower Limit (g/cm³)	Upper Limit (g/cm³)	Grit Size	Lower Limit (g/cm³)	Upper Limit (g/cm³)
20	1.76	1.96	46	1.71	1.91	90	1.67	1.87
22	1.76	1.96	54	1.71	1.91	100	1.67	1.87
24	1.76	1.96	60	1.67	1.87	120	1.67	1.87
30	1.76	1.96	70	1.67	1.87	150	1.59	1.79
36	1.76	1.96	80	1.67	1.87			

LPD measured on untreated grains

**WASHINGTON MILLS**

Offered by:  
 Washington Mills  
 20 North Main Street  
 North Grafton, MA 01536  
 508-839-6511  
 www.washingtonmills.com

For more information, please contact:

**Saint-Gobain Ceramic Materials  
 Specialty Grains and Powders**  
 1 New Bond Street  
 M/S 525-203  
 PO Box 15137  
 Worcester, MA 01615-0137  
 USA  
 Tel: +1 800 243 0028  
 Fax: +1 508 795 2380

**Saint-Gobain Ceramic Materials GmbH  
 Specialty Grains and Powders**  
 Branch office  
 Concordiaplatz 3  
 51143 Köln  
 Germany  
 Tel: +49 2203 956 468  
 Fax: +49 2203 956 421

**Saint-Gobain K.K. CM Division**  
 Kitahama 1-Chome Heiwa Bldg. 7F  
 1-1-14, Kitahama, Chuo-ku, Osaka, 541-0041  
 Japan  
 Tel: +81 6 4707 1700 (main)  
 Fax: -81 6 4707 1701

**Saint-Gobain Ceramic Materials  
 Specialty Grains and Powders**  
 7th Floor, Office Tower  
 No. 222 East Yan'an Road  
 Bund Center  
 Shanghai 200002  
 China  
 Tel: +86 21 6361 7731

WARNING: The information contained in this document is believed to be accurate and reliable without guarantee or warranty on the part of Saint-Gobain Ceramics and Plastics Inc. Further, nothing present herein should be interpreted as an authorization or inducement to practice any patented invention without an appropriate license.

CGN2015-09-01  
 SG-SGP-09\_E01

©2015 Saint-Gobain Ceramic Materials GmbH

www.abrasivematerials.saint-gobain.com

